

CORE-FLO™ DC

CORE-FLO™ DC LITE

Dual-Cure Core Build-Up, Endodontic Post Cement
& Dentin Replacement Material



Rx Only



CORE-FLO™ DC

Dual-Cured Flowable Core Build-Up/ Dentin Replacement Material

Core-Flo™ DC is a versatile dual-cured core material dispensed by a 1:1 syringe dispenser. It is ideal for core build-ups, post cementation and dentin replacement. Core-Flo DC is radiopaque and available in two esthetic shades, Natural/A1 and Opaque White, to meet all of your direct and indirect restorative requirements.

STACKABLE

DISPENSER
REQUIRED

THE DENTAL
ADVISOR
++++½
www.dentaladvisor.com

Dental PRODUCT
SHOPPER
BEST
PRODUCT

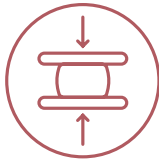
CORE-FLO DC PHYSICAL PROPERTIES

WORKING TIME/ SETTING TIME



2 MINUTES MIN.
7 MINUTES MAX.
AT ROOM TEMP.

COMPRESSIVE STRENGTH



LC = Nat: 269, Opaque: 273 Mpa
SC = Nat: 259, Opaque: 256 Mpa

FLEXUAL STRENGTH



LC = Nat: 134, Opaque: 113 Mpa
SC = Nat: 113, Opaque: 120 Mpa

RADIOPACITY



1.9mm
Easy to distinguish

CORE-FLO™ DC LITE

Self-Leveling Dual-Cured Core Material

Core-Flo™ DC Lite is a dual-cured core material that is dispensed with an auto-mix dual-syringe. Core-Flo DC Lite's optimal self-leveling viscosity allows for excellent adaption resulting in gap-free margins when replacing natural dentition with a direct core build-up. In addition, the clinician can cement the post and build-up the core. Core-Flo DC Lite is available in Natural/A1 and Opaque White shades.

SELF-LEVELING

2023
REALITY
ESTHETIC AWARD
★★★★★
REALITY'S
CHOICES

Dental PRODUCT
SHOPPER
BEST
PRODUCT

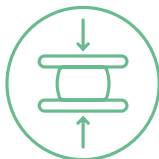
CORE-FLO DC LITE PHYSICAL PROPERTIES

WORKING TIME/ SETTING TIME



1 MINUTES MIN.
7 MINUTES MAX.
AT ROOM TEMP.

COMPRESSIVE STRENGTH



LC = Nat: 258, Opaque: 233 Mpa
SC = Nat: 205, Opaque: 215 Mpa

FLEXUAL STRENGTH



LC = Nat: 121, Opaque: 114 Mpa
SC = Nat: 125, Opaque: 171 Mpa

RADIOPACITY



1.5mm
Easy to distinguish

CORE-FLO FAMILY BENEFITS

EXCELLENT FLOWABILITY

Void-free flow makes it ideal for post cementation

HIGH STRENGTH

Creates a strong foundation for crowns and direct restoratives - cuts just like dentin

WORKS WITH OR WITHOUT POSTS



LOW SHRINKAGE

Properties allow it to be used effectively as a dentin replacement material

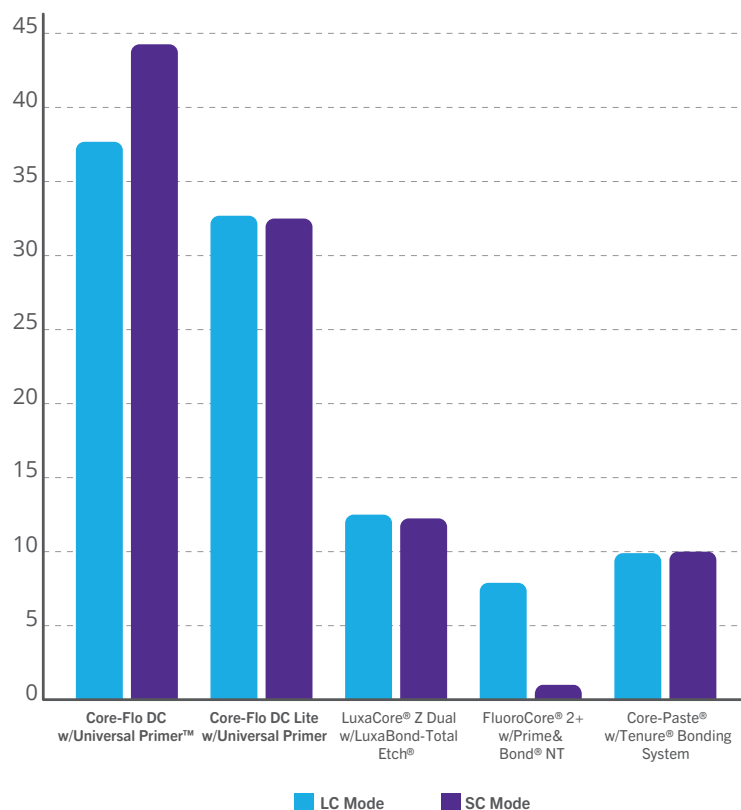
RADIOPAQUE

Easy to identify on radiographs for quick and effective diagnosis

RELIABLE

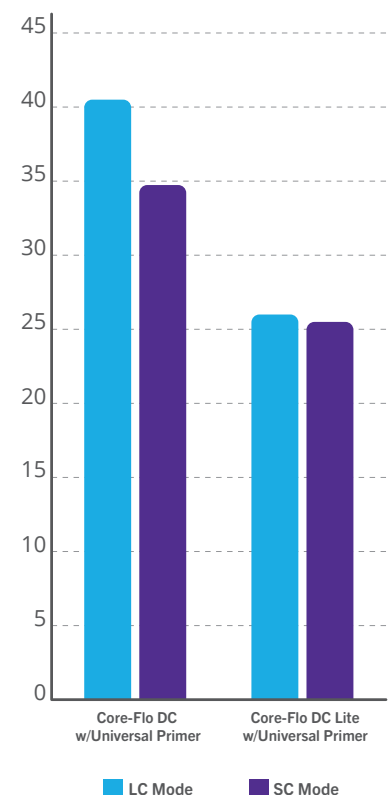
Dual-cure chemistry: performs equally well in light-cure and self-cure modes

Shear Bond Strength to Dentin (Total-Etch) of Core Build-Up Materials in LC & SC Modes*



Recommended competitor adhesives used in total-etch mode per manufacturer instructions.
All trademarks are the property of their respective owners.
*BISCO data on file.

Shear Bond Strength to Dentin (Self-Etch) of Core-Flo DC and Core-Flo DC Lite in LC and SC Modes*



*BISCO data on file

CORE-FLO™ DC

CASE STUDY Dentistry courtesy of Dr. Jack Griffin



1. Failing restoration with recurrent decay and enamel fractures.



2. After isolation with dam and wedges, old restoration and decay were removed.



3. A sectional, wedge, and ring were placed before selectively etching the enamel. All-Bond Universal® was applied, air thinned, and light-cured, followed by Core-Flo DC.



4. The dual-cure chemistry provides reliable polymerization while providing a high strength and dentin-like core.



5. The molar was prepped for a zirconia crown.



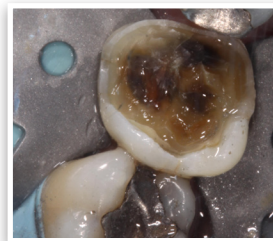
6. The zirconia crown provides an excellent restorative service for the patient.

CORE-FLO™ DC LITE

CASE STUDY Dentistry courtesy of Dr. Adamo Notarantonio



1. Pre-operative photo.



2. Amalgam and gross decay excavated.



3. After adhesive is placed, Core-Flo DC Lite is placed into the preparation.



4. Final Preparation.



5. Top view of final preparation.



6. Final post operative bitewing #19.

ORDERING INFORMATION

CORE-FLO DC LITE



CORE-FLO DC LITE w/UNIVERSAL PRIMER™ Intro Kit

AB-17410K

1 Dual-Syringe CORE-FLO DC LITE Shade: NATURAL/A1 (8g), OPAQUE WHITE (8g),
1 Bottle ea. UNIVERSAL PRIMER Parts A&B (6ml ea.), Accessories, Instructions

CORE-FLO DC LITE - 1 Dual-Syringe (8g), Accessories, Instructions

NATURAL/A1
OPAQUE WHITE

A-17801P
A-17803P

CORE-FLO DC



CORE-FLO DC - 1 Dual-Syringe (8g), Accessories, Instructions

NATURAL/A1
OPAQUE WHITE

A-23011P
A-23012P

1:1 Syringe Dispenser - Required for use with CORE-FLO DC

L-22020P

LET'S BOND! GIVE US A CALL:
1-800-247-3368 • www.bisco.com

Rx Only

MC-2433CF

